

# South Southall Children's Centres

## Spring Term 2024

### Activities and Timetables



Greenfields Nursery School  
& Children's Centre

## **Greenfields Nursery School & Children's Centre**

Recreation Rd, Southall, UB2 5PF (ph. 020 8813 8079)

&

## **Havelock Children's Centre**

(at the Havelock Community Centre)

17 Trubshaw Rd, Southall, UB2 4XW (ph. 020 8571 1219)

Website for both Centres: [www.greenfieldschildren.com](http://www.greenfieldschildren.com)



## TABLE OF CONTENTS

- 1) Free childcare place for 2 year olds
- 2) Free Nursery School Places
- 3) Free Childcare for Eligible Working Families
- 4) Health and Development Checks
- 5) Drop In Feeding Support Group
- 6) Child Health Clinic
- 7) Ealing children's speech and language therapy advice line
- 8) Free Legal Advice
- 9) Fun & Learn Social Communication Support
- 10) Talk & Play group speech and language support
- 11) Pregnant Mums & Expectant Dads / Infant feeding support and advice
- 12) Breastfeeding Peer Support in South Southall
- 13) Story and Action Rhymes at Southall Library
- 14) Stay & Play sessions at Havelock CC
- 15) Baby Massage at Havelock Children's Centre
- 16) Family Links
- 17) NHS Healthy Start Scheme
- 18) Family Information Service and 0-5 Know How
- 19) Contact Ealing
- 20) Housing for women
- 21) Greenfields Nursery School Timetable
- 22) Havelock Children Centre Timetable

# **free** Education and Childcare for 2 year olds of families receiving additional forms of government support

*If you have an income less than 16,190 and / or are in receipt of government benefits such as; Income Support, Job Seekers Allowance, Universal Credit or Child Tax Credit, you may be entitled to a free nursery place for your two year old. 15 hours a week (38 weeks' year).*

## South Southall Locality Providers:

### ➤ Greenfields Nursery School & Children's Centre

Recreation Rd, Southall, UB2 5PF  
Tel: 020 8813 8079



### ➤ PEAPODS Early learning Centre Montessori School Southall,

Wimborne Ave, Southall, UB2 4HB  
Tel: 020 8574 7934



### ➤ Snowflakes Day Nursery and Montessori

St Mary's Church Hall, Norwood Green Road  
Norwood Green, Southall, Tel: 0208 507 3222

### ➤ TwinkleTots Day Nursery Ltd

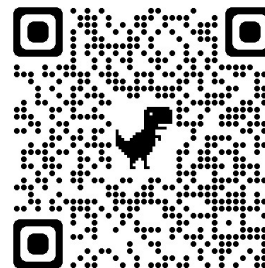
Havelock Community Centre, 17 Trubshaw Road,  
Southall UB2 4XW

### Your child will be able to:

- Play and have fun with other children
- Develop their speaking and listening
  - Learn new things
- Improve their confidence and get ready for school

**To find out if you are eligible** use the Ealing Two Year Old Childcare Checker by following the link or QR code below.

<https://synergyweb.ealing.gov.uk/Synergy/Twoyearold.aspx>



If you prefer to talk to someone or need support with this application, please call Ealing's Family Information Service on 020 8825 5588 (Mon-Fri, 9am to 5pm).

# **free** Nursery School Places

**at Greenfields Nursery School & Children's Centre**

Recreation Rd, Southall UB2 5PF    Tel: 020 8813 8079

15 hours a week Nursery education is FREE for ALL three and four-year-olds in the UK, regardless of income or residency status.

***Just walk into Greenfields to register your child for Nursery School, please bring along your child's birth certificate or passport***

***We also offer 30 hour funded nursery places***

You can now get 30 hours of free childcare each week if your child is aged 3 or 4, both parents/carers work and earn less than £100,000 a year each. Single parents are also eligible.

Apply today to get a place for the new term.

[www.childcarechoices.gov.uk](http://www.childcarechoices.gov.uk)



**We provide additional childcare care before and after school (there is a charge for this)**

Greenfields has been awarded Nursery of the Year in the 2018 National Nursery World Awards. And is recognised as an Outstanding School and Childcare provision by Ofsted



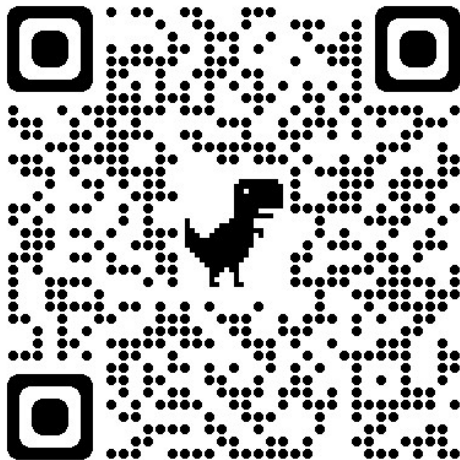
# Free Childcare for Eligible Working Families

If you and your partner are working or if you are a working single parent, you may be eligible for;

- 15 hours of free childcare for your two year old (from Apr 2024)
- 30 hours of free childcare for your 3-4 year old

Visit the Childcare Choices website to find out if you are eligible by using the link or QR code below.

<https://www.childcarechoices.gov.uk/>



## Health & Development Check For Two-Year-Olds

**This check is free and gives you a chance to ask questions and find out about:**

- Your child's development
- Speech, language & communication
- Sleep management
- Diet & nutrition
- Looking after your child's teeth
- Managing behaviour
- Beginning toilet training
- Free nursery/childcare places (if eligible)
- Vaccinations

\*Collect a free gift for your child (while stocks last)

\*Questions to ask at your appointment (over-page)

To book an appointment

Telephone:

020 8102 5888

Email: [ealingadminhub@nhs.net](mailto:ealingadminhub@nhs.net)



Early Start Ealing

## Health & Development Check for Babies 9 Months to 1 Year

**This check is free and gives you a chance to ask questions and find out about:**

- Your baby's development
- Language & learning
- Sleep management
- Diet & nutrition
- Looking after your baby's teeth
- Establishing routines
- Keeping baby safe
- Vaccinations

\* Questions to ask at your appointment (over-page)

To book an appointment

Telephone:

020 8102 5888

Email: [ealingadminhub@nhs.net](mailto:ealingadminhub@nhs.net)



Early Start Ealing

# FEEDING SUPPORT GROUP

---

- Drop In Group Support
- Warm and welcoming weekly sessions with other local parents. Come along with your little one (partners are welcome too), chat to other parents about how feeding is going, share stories and get advice and support from our Infant Feeding Practitioners. \*Spaces are limited and available on a first come first serve basis
- Monday: 9:45am – 11:30am Havelock Children's Centre, Trubshaw Rd, Southall, UB2 4XW

## Breastfeeding



# Child Health Clinic



## at Havelock Children's Centre

Havelock Community Centre, 17 Trubshaw Rd, Southall UB2 4XW



### **Mondays**

### **9:30 - 11:15am**

### **Appointment Only**

Please call 020 8102 5888 or email

[clcht.ealingadminhub@nhs.net](mailto:clcht.ealingadminhub@nhs.net)

To book an appointment

**Please bring your RED book to the  
Clinic**

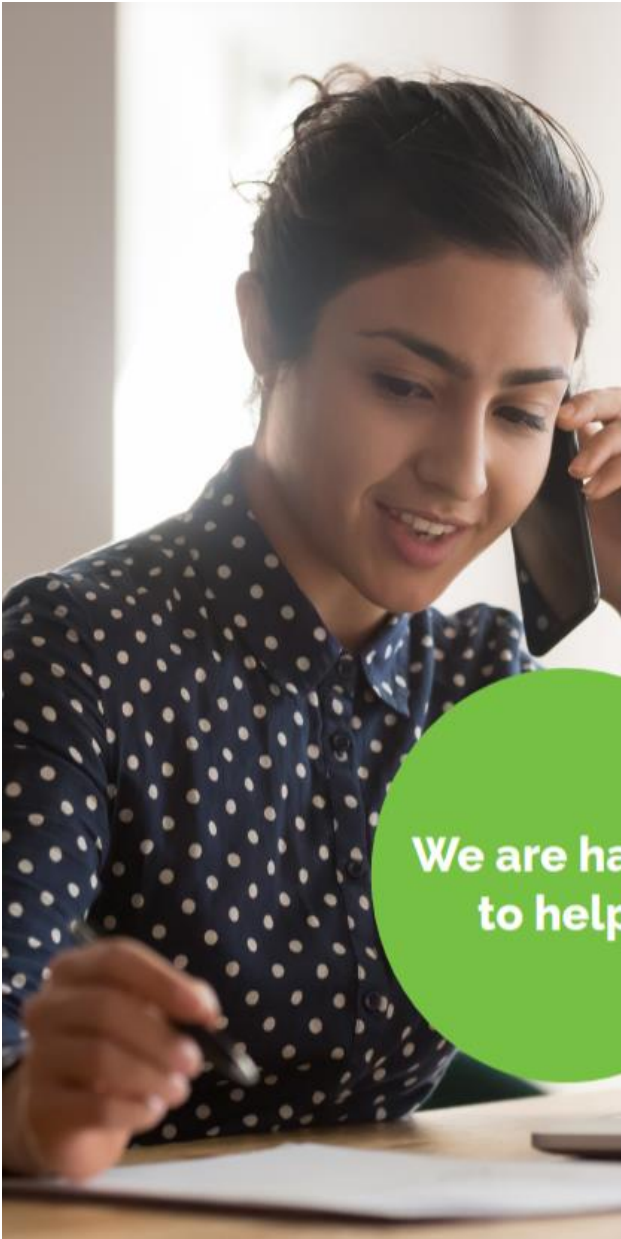
**Contact Health Visiting Team on  
020 8102 5888**

**if you have any enquiries outside of  
clinic hours**

Services include:

- Baby weighing
- Advice and support from Health Visitors about your child's health and development
- Information and referrals to specialist health services and professionals in Ealing, for example, Weaning group; Speech and Language; Occupational therapy; Breastfeeding
- Healthy Start Vitamins- get your voucher signed





**We are happy  
to help!**



**Ealing Community  
Partners**

## **Ealing children's speech and language therapy advice line** for parents and professionals

Are you looking for advice about how to support your child (0-18) with their communication at home?

Do you have a general question about speech and language?

**Monday to Friday, 1 - 4pm**  
**07512 716 478**

(We can call you with an interpreter if needed)

**Email:** [ealing.sltadvice@nhs.net](mailto:ealing.sltadvice@nhs.net)  
**Facebook:** [facebook.com/SLTEaling](https://www.facebook.com/SLTEaling)

# Free Legal Advice

## West London Equality Centre

ADVANCING EQUALITY AND HUMAN RIGHTS FOR ALL

**Free advice :** Family, Immigration,  
Welfare and Benefits,  
Employment

Visit the West London Equality Centre website at [wlec.net](http://wlec.net) or call one of the following numbers to book an appointment – 020 8231 2575, 020 8231 2576, 020 8231 2550, 020 8231 2574.



**coram** **clc**  
Children's Legal Centre

*Free legal advice on  
immigration related issues for  
children and their families*

*Are you unsure about your rights in the UK?  
Do you and your family need help with  
immigration /asylum problems?*

*A lawyer may be able to answer questions  
about you and your child's immigration status  
and rights to access support and  
accommodation, health care and education.*

*For more information please visit the  
Coram CLC website at  
[childrenslegalcentre.com](http://childrenslegalcentre.com)  
or email [mcpadvice@coramclc.org.uk](mailto:mcpadvice@coramclc.org.uk)*

Registered charity No. 281222

# Fun & Learn: Targeted Group



**A planned play session for parents/carers and their children aged Under 5 who have social and communication needs**  
– especially for children with attention and social interaction difficulties (ie. difficulties with: eye contact, playing with peers, understanding what is happening around them, focusing on activities.)  
Suitable for children with speech & language concerns; or children with Downs Syndrome

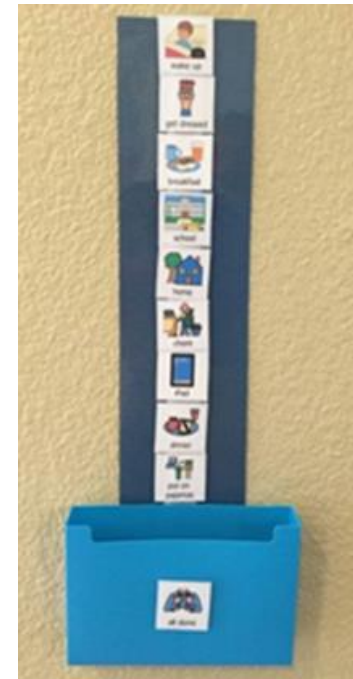


## Spring 2024 – Courses

Once a week on a Friday 9.30-10.30am

Spring 1- 12<sup>th</sup> Jan– 9<sup>th</sup> Feb 2024

Spring 2 - 23<sup>rd</sup> Feb – 22<sup>nd</sup> Mar 2024



intensive  
interaction



## at: Havelock Children's Centre

17 Trubshaw Rd, Southall UB2 4XW

Ph 020 8571 1219 or 020 8813 8079

Referrals by professionals

Free and Planned Play; Rhymes & Songs; Table top and adult-led activities; Sensory Play; Attention builders.

Support and strategies for parents, led by Early Years practitioners with some Speech Therapy messages.

**Places for "Fun and Learn" are strictly limited to 5 children with their parents.**

**Please ensure you and your child are able to attend all 5 sessions.**

# Talk & Play group (Under 3s)



**“Talk and Play” is a play-based group for under 3s run by Early Years Practitioners in Ealing; supported by visits from Speech and Language Therapists. The group provides families with strategies to support their child’s language and communication development. Your child does not need a referral to Speech and Language Therapy services to attend this group. Please ring Havelock or Greenfields to book a place at the next course with Raj. Sessions are run weekly (term time only). Please arrive on time.**

## Talk & Play sessions are held at: Havelock Children’s Centre

17 Trubshaw Rd, Southall UB2 4XW

Spring Term 2024 – Courses

Once a week on a Friday 11-12pm

Spring 1 – 12<sup>th</sup> Jan – 9<sup>th</sup> Feb 2024

Spring 2 - 23<sup>rd</sup> Feb – 22<sup>nd</sup> Mar 2024

must be able to commit to attending ALL 5 sessions

Call Raj on 020 8571 1219, or 020 8813 8079



## For pregnant mums and expectant dads

Did you know you can meet a health visitor from the Early Start Ealing team when you are 28-32 weeks pregnant?

Your health visitor can support you with:

- Preparing for a new baby
- Preparing to be parents
- Learning about successful breastfeeding and infant feeding.
- Your health and well-being during pregnancy.
- Information about clinics and other services for you and your baby in the local area.

**Acton & Central Ealing**  
020 8383 8734

**Northolt & Greenford**  
020 3313 7519

**Southall & West Ealing**  
020 3313 7827

BOOK AN  
APPOINTMENT  
TODAY!



Early Start Ealing

## EALING CHILDREN'S CENTRES – help with feeding your baby

### Face to face support - ONE TO ONE CLINIC – appointment only

To book a one to one appointment with **Caroline Neale Infant Feeding Support** at **Grange Children's Centre W5 4HN** please text **07942 343 281**

**Aggie Sheriff Health Visitor Infant Feeding Coordinator** and her colleagues are also running face to face support in children's centres – please text **07776 670 910** OR email [clcht.ealingbreastfeedingsupport@nhs.net](mailto:clcht.ealingbreastfeedingsupport@nhs.net)

### ZOOM BREASTFEEDING GROUP



**Kerrie La Leche League Breastfeeding Counsellor** runs a zoom breastfeeding group **EVERY Thursday** – for details, go to <https://llwestlondon.weebly.com>

### TELEPHONE SUPPORT and EMAIL SUPPORT

**Early Start Health Visiting Teams Breastfeeding Support**  
[clcht.ealingbreastfeedingsupport@nhs.net](mailto:clcht.ealingbreastfeedingsupport@nhs.net)

**Early Start (health visiting teams) Duty Line: 0208 102 5888**

**Northolt and Greenford team: [clcht.nag-earlystartealing@nhs.net](mailto:clcht.nag-earlystartealing@nhs.net)**

**Southall and West Ealing team: [clcht.swe-earlystartealing@nhs.net](mailto:clcht.swe-earlystartealing@nhs.net)**

**Acton and Central Ealing team: [clcht.ace-earlystartealing@nhs.net](mailto:clcht.ace-earlystartealing@nhs.net)**

**Aggie Sheriff Health Visitor Infant Feeding Coordinator 07776 670 910**

**Caroline Neale Infant Feeding Ealing Children's Centres Lactation Consultant** (and registered midwife) **07942 343 281** text and Caroline will reply or email [infomumsmidwife@gmail.com](mailto:infomumsmidwife@gmail.com)

# Breastfeeding Peer Support in South Southall



Raj is trained for Breastfeeding Peer support:

Make an appointment for a one to one session with Raj if you have any concerns or questions about breastfeeding your baby. No question is too small!

Drop in to see Raj at Greenfields or Havelock Children's Centres at one of our play groups or clinic sessions; meet a mix of other mums, some of whom are just starting breastfeeding, and share experiences with them



## Greenfields Nursery School & Children's Centre

Recreation Rd, Southall UB2 5PF  
Ph 020 8813 8079

## Havelock Children's Centre

17 Trubshaw Rd, Southall UB2 4XW  
Ph 020 8571 1219

# Story and Action Rhymes with Raj at Southall Library

The Dominion Centre , 112 The Green, Southall UB2 4BW

**Wednesdays 2pm - 3pm**

**For Preschool children**

with parents/carers

*(sessions held term time only)*

*Share stories traditional and cultural;  
learn action songs and rhymes;  
use simple story props and puppets  
to engage with your baby*



# Stay and Play Sessions at Havelock Children's Centre with Raj and Charanjit



17 Trubshaw Rd, Southall UB2 4XW ph. 020 8571 1219



**Tuesdays 9:30 -11:30am and 12.30-2.30pm**

**Thursdays 9:30 -11:30 and 12.30-2.30pm**

**Play sessions at Havelock run term time only**



**Free & planned play  
Arts and craft; Ball skills; Messy play; Dance  
and movement  
Stories and rhymes; Outdoor play**

***Please bring a piece of fruit or veg  
to share at snack time***



# Baby Massage: Spring Term



- *Learn massage strokes for baby*
- *Develop your bond with baby through the communication of massage*
- *For parents and baby aged 0 to 12 months old*

**free  
tuition**

## ***Baby Massage courses with Paula at Havelock Children's Centre***

***17 Trubshaw Rd, Southall UB2 4XW ph. 020 8571 1219***

***Every Wednesday for 5 weeks (term time only)***

***Wed 21<sup>st</sup> Feb– 20 Mar 2024***

***at 10am - 11am***

**Limited to 8 places only per course**

***Book your place at admin by leaving your name and contact number***



For further information please leave your details at admin office or call 020 813 8079 and Paula will contact you.

# Family Links: Spring 2024

Havelock Children's Centre

17 Trubshaw Road, Southall, UB2 4XW. ph 020 8571 1219

## Monday 15<sup>th</sup> Jan – 11<sup>th</sup> Mar 2024

### 12:45pm – 2.45pm

(term time only, - NO session on 12th Feb 2024)



#### 10 week Nurturing Programme for parents

Use effective tools to help adults and children to:

- understand and manage feelings and behaviour
- improve relationships
- improve emotional health and well-being
- develop self-confidence and self-esteem

Tips on how to build on pre-existing parenting skills to be a more effective parent through

positive encouragement. Discussion, role play & brainstorming activities in an interactive parenting programme.



**Limited to 14 places (NO creche provision)**

Facilitators, Raj and Satnam; between them they also speak languages Punjabi, Polish, Hindi, Urdu and Gujarati

This is a targeted families parenting course. Referral by professionals to [admin@greenfieldschildren.com](mailto:admin@greenfieldschildren.com)

Or contact Ealing Parenting Services for referral forms and other parenting courses in Ealing [parentingserviceadmin@ealing.gov.uk](mailto:parentingserviceadmin@ealing.gov.uk)

# NHS Healthy Start

Find out if you are eligible for up to **£8.50 per week**, to help buy food, milk and vitamins for you and your child

## HEALTHY START SCHEME: CHECKLIST FOR ELIGIBILITY

To apply for a Healthy Start Card you must be the following:

Over 10 weeks pregnant OR Have a child under 4 years old

AND be receiving 1 of the following benefits:

1. Child Tax Credit (if family's annual income is less than £16, 190)
2. Income Support
3. Income-based Jobseekers Allowance
4. Universal Credit (Family take home pay less than £408/month)
5. Income-related Employment and Support Allowance (ESA)
6. You or your partner get Working Tax Credit run-on only
7. Pension Credit

*Can also apply if pregnant and under the age of 18 and NOT on benefits*

*Tick if applicable*



Scan the QR code to be directed to the **Healthy Start Application Page**

If NOT a British citizen but your child is, please email [Healthystartclaim@dhsc.gov.uk](mailto:Healthystartclaim@dhsc.gov.uk)

[www.healthystart.nhs.uk](http://www.healthystart.nhs.uk)



If you're pregnant or have children under the age of 4, you could get help to buy food and milk



Apply online to get your prepaid card.

[www.healthystart.nhs.uk](http://www.healthystart.nhs.uk)

[Twitter](https://twitter.com/NHSHealthyStart) [Facebook](https://www.facebook.com/NHSHealthyStart) @NHSHealthyStart

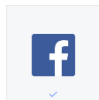
The alloy prepaid card is issued by alloy Ltd pursuant to license by Mastercard International Incorporated, alloy Ltd is a company regulated by the Financial Conduct Authority (FCA 500539) for the issuance of electronic money. Head office and registered address: Fortis et Fides, Whitestone Business Park, Hereford, HR1 3SE (Company No 02933191). Mastercard is a registered trademark of Mastercard International Incorporated.

Early Start Ealing

# 0-5 Know How for Ealing Families

New website for parents and carers  
[www.ealingfamiliesdirectory.org.uk](http://www.ealingfamiliesdirectory.org.uk)

- Development Stages & Early Learning
- Breastfeeding & Healthy Eating
- Children's Centres & Childcare
- Safety in the Home & Out and About
- Immunisations and Childhood Illnesses
- Information on FREE Childcare



@EalingKnowHow



## Family Information Service

Ealing's **Family Information Service** handles over 800 enquiries each month - so we are very experienced at understanding the needs of parents, carers, children and young people.

### Call us to find out about:

- Ofsted registered childcare (nurseries, playgroups, childminders etc)
- Paying for childcare
- Children's centres
- Education
- Family support services
- Leisure activities
- Services for children with additional needs and disabilities
- Services for young people



**020 8825 5588**

children@ealing.gov.uk  
www.childrenscentres.org.uk



Children & Families



## HOW WE CAN HELP

If you live anywhere in the London Borough of Ealing and have a disabled child, or a child with a health condition or additional needs, please get in touch. We provide information on a wide range of issues affecting families with disabled children, as well as where to go locally for support.



### INFORMATION & ADVICE

Our family worker and parent adviser can help you find information about your child's condition, benefit entitlements and we can tell you about other organisations that can help.



### LOCAL INFORMATION

We produce quarterly newsletters and email bulletins with information about events, leisure opportunities, support groups and workshops for families with disabled children in Ealing.



### FAMILY EVENTS & ACTIVITIES

We run day trips to various places during school holidays for the whole family. We have a year-round program of events.

*"Keeping me updated with information about events in my area, support available, benefits advice – makes me feel I am supported by Contact."*

*"This workshop has been such a valuable experience, a great course and it's been really helpful to speak with parents in similar situations."*



### WORKSHOPS

We run workshops for parent carers on issues such as sleep, behaviour, coping and support. They also give parents the chance to come together for mutual support.



### PARENT SUPPORT GROUPS

Groups provide an opportunity to meet other parents, share information and hear from relevant professionals. We run:

- a carers' support group, meeting every 4 weeks
- an autism and ADHD condition-specific group, meeting every 6-8 weeks.
- an Early Years support group (0-5 yrs), meeting every 4 weeks at Greenfields Children's Centre, Southall.



### LINKING FAMILIES

We bring families together at our workshops and events. We also put families in touch with each other through support groups.

## GETTING IN TOUCH

You can contact us directly or ask a professional to make a referral.

### Contact Ealing

St George's Community Centre  
8-12 Lancaster Road, Southall UB1 1NW

☎ 020 8571 6381

✉ ealing@contact.org.uk

*"Lovely to see my son enjoying himself with people and an environment that is tailored to his needs. The circus skill and story telling were both excellent."*





## **Domestic Abuse Community Outreach Service**

Support for all victims and survivors in Ealing who cannot access or do not want Refuge-based support.

For further information or to make a referral please contact

Tel: 020 4513 9678

Email:

[Referrals\\_EDVA@h4w.co.uk](mailto:Referrals_EDVA@h4w.co.uk)

The service is rolled out across the Borough of Ealing which is a floating support service that reaches out to V/S, supporting:

- Ethnic Minorities
- Women and families
- Young People (adolescents)
- LGBTQ+ community
- Males

Its remit is wide, with the primary focus of empowering individuals to feel safe and maintain or regain their independence.

We can support them with the following:

- Safety planning
- Obtaining extra security in their home to enable them to remain there safely
- Domestic abuse awareness
- Moving forward and positive relationships
- Advice and support with housing, i.e., supporting them to keep their home
- Budgeting and debt counselling
- Advice on benefits and claiming them
- Advice and signposting/support to access legal services
- Advice and signposting/support to access education, training, and employment
- Group work and counselling
- Access to specialist support services to suit each individual need
- Liaising with other agencies

Professionals and self-referrals can contact us on:

[Referrals\\_EDVA@h4w.co.uk](mailto:Referrals_EDVA@h4w.co.uk)

020 4513 9678

# Greenfields Nursery School & Children's Centre: Spring Term Activities 2024

Recreation Rd, Southall, Middlesex UB2 5PF

Telephone: 020 8813 8079

Monday	Tuesday	Wednesday	Thursday	Friday
<p><b>9am-12pm</b> <b>Midwifery Ante Natal Clinic</b> Appointments Only (AYR)</p> <p><b>12.30am – 4.30pm</b> <b>NHS Development Checks</b> Appointments only (AYR) HV: <b>0208 102 5888</b></p> <p><i>Key :-</i> <i>TTO – Term Time Only</i> <i>AYR – All Year Round</i></p>	<p><b>9am – 1pm</b> <b>NHS Development Checks</b> Appointments only (AYR)</p> <p><b>1.30pm – 4.30pm</b> <b>Midwifery Ante Natal Clinic</b> Appointments Only (AYR)</p>	<p><b>12.30pm-4pm</b> <b>Midwifery Antenatal Clinic</b> Appointments Only (AYR)</p> <div data-bbox="842 879 1134 1065" style="border: 1px solid black; padding: 5px; text-align: center;"> <p><b><u>Story &amp; Action</u></b> <b><u>Rhymes</u></b> 2:00-3:00pm <b><u>at Southall Library</u></b> Term time only</p> </div>	<p><b>9am – 5pm</b> <b>Peri Natal Mental Health</b> Appointments only (AYR)</p> <p><b>9am-12pm</b> <b>Midwifery Ante Natal Clinic</b> Appointments Only (AYR)</p> <p><b>12.30am – 2.30pm</b> <b>NHS Development Checks</b> Appointments only (AYR) HV: <b>0208 102 5888</b></p>	<p><b>9am -10.30am</b> <b>Makaton Workshop</b> 12<sup>th</sup> Jan – 9<sup>th</sup> Feb Pre-Booking Required</p>

# Havelock Children's Centre: Spring Term Activities 2024

at the Havelock Community Centre, 17 Trubshaw Rd, Southall, UB2 4XW ph. 020 8571 1219

Monday	Tuesday	Wednesday	Thursday	Friday
<p>9:30-11:15am <b>Child Health Clinic</b> <b>Appointment Only (AYR) by phone.</b> Please call 020 8102 5888 to arrange an appointment.</p> <p>9:45-11:30am <b>Drop In Feeding Support Group</b></p> <div data-bbox="67 654 392 882" style="border: 1px solid black; padding: 5px; margin-top: 20px;"> <p><u>Family Links</u></p> <p>15<sup>th</sup> Jan – 11<sup>th</sup> Mar 2024</p> <p>1:00pm-2:45pm</p> </div>	<p>9:30-11:30am <b>Stay and Play</b> for children under 5 &amp; parents Drop in</p> <p>12:30-2:30pm <b>Stay and Play</b> for children under 5 &amp; parents Drop in</p>	<div data-bbox="823 277 1141 501" style="border: 1px solid black; padding: 5px; margin-bottom: 20px;"> <p><u>Baby Massage</u> 10am-11am</p> <p>21st Feb - 20 Mar 2024</p> <p>Book by Calling: 0208 571 1219</p> </div> <div data-bbox="823 622 1141 808" style="border: 1px solid black; padding: 5px;"> <p><u>Story &amp; Action Rhymes</u> 2:00-3:00pm <b>at Southall Library</b> Term time only</p> </div> <p>Peri Natal Mental Health 9am-1pm Appointments only</p>	<p>9:30-11:30am <b>Stay and Play</b> for children under 5 &amp; parents Drop in</p> <p>12:30-2:30pm <b>Stay and Play</b> for children under 5 &amp; parents Drop in</p>	<div data-bbox="1534 277 1885 682" style="border: 1px solid black; padding: 5px; margin-bottom: 20px;"> <p><u>Fun &amp; Learn</u></p> <p>Children with speech &amp; communication needs Referrals by health &amp; education professionals</p> <p><b>9:30am – 10:30am</b> <b>12<sup>th</sup> Jan – 9<sup>th</sup> Feb 2024</b> <b>23<sup>rd</sup> Feb – 22 Mar 2024</b></p> <p>Bookings only</p> </div> <div data-bbox="1534 696 1885 1068" style="border: 1px solid black; padding: 5px;"> <p><u>Talk &amp; Play</u></p> <p>Speech &amp; Language support for children under three and their parents</p> <p><b>11am– 12pm</b> <b>12<sup>th</sup> Jan- 9<sup>th</sup> Feb 2024</b> <b>23<sup>rd</sup> Feb - 22<sup>nd</sup> Mar 2024</b></p> <p>Bookings only</p> </div>

**Twinkle Totz Day Nursery, 8am-6pm Mon to Fri, all year round, Tel: 0208 617 3839 or 07867 557383**

**Havelock Children's Centre will be closed Monday 12<sup>th</sup> February to Friday 16<sup>th</sup> February 2024**