

Greenfields Nursery School and Children's Centre

Head of Centre: Ellie Larkin

Supporting Children at School with Medical Conditions Policy

Date of policy	Next review date	Nominated governor/committee
07/11/2018	Nov 2021	Ms G Borg

Introduction

Greenfields Nursery School and Children's Centre is an inclusive community that welcomes and supports children with medical conditions so that they can play a full and active role in all aspects of nursery life, remain as healthy as possible and achieve their academic potential.

The Department for Education statutory guidance 'Supporting pupils with medical conditions at school' (2014) states:

"Children and young people with medical conditions are entitled to a full education and have the same rights of admission to school as other children. This means that no child with a medical condition can be denied admission or prevented from taking up a place in school because arrangements for their medical condition have not been made. However, in line with their safeguarding duties, governing bodies should ensure that pupils' health is not put at unnecessary risk from, for example, infectious diseases."

This policy takes into account Greenfields' legal duties under the Children and Families Act 2014 to make arrangements to support children with medical conditions, as well as its duties under the Equality Act 2010. This policy details our arrangements to support children with long term medical conditions. In this document 'medical condition' refers to any physical or mental health condition that requires ongoing health professional input.

This policy will be reviewed in three years or earlier if there is any change in the regulations. The effectiveness of these procedures will be monitored by the governing board.

Glossary

Controlled Drug (CD): Medication that is controlled as part of the misuse of drugs legislation (e.g. methylphenidate/Ritalin or some strong pain killers)

Education, Health and Care (EHC) plans: A legal document that describes a child's special educational, health and social care needs, and support required to meet those needs

General Data Protection Regulation (GDPR): A data protection regulation from May 2018 intended to strengthen and unify data protection for individuals.

Individual Healthcare plans: A document that describes a child's medical needs and support required in school to meet those needs.

Individual risk assessment: A risk assessment to determine the risks and controls required for children with severe/complex or potentially life-threatening health conditions.

Medical condition: For the purposes of this policy, 'medical condition' refers to any physical or mental health conditions that required ongoing health professional input (e.g. from GP, clinic or hospital specialist).

Medical Conditions Co-ordinators/leaders: Designated members of staff who lead the implementation of the 'Supporting Children at School with Medical Conditions' policy and support children with medical conditions.

Special educational needs or disabilities (SEND): Special educational needs and disabilities that can affect a child or young person's ability to learn.

Special Educational Needs Co-ordinator (SENCO): Designated members of staff who lead the implementation of the SEND policy and support children with SEND.

Identification, Registers and Individual Healthcare plans

1. *Greenfields Nursery School and Children's Centre identifies all children with medical conditions*

- 1.1. Greenfields asks parents/carers if their child has any physical or mental health condition on the medical questionnaire as part of the enrolment process (Appendix 2), and annually thereafter. The school asks for explicit consent to share this information with relevant school staff and healthcare professionals.
- 1.2. Greenfields follows the procedure detailed in Appendix 3 to ensure that every child with a medical condition has an individual healthcare plan in place before they start nursery (see section 3). Any exception to the requirement to have an individual healthcare plan in place before the child starts nursery will be at the discretion of the senior leadership team.
- 1.3. Parents/carers are responsible for informing Greenfields of any new diagnosis, or changes to their child's medical condition, as soon as possible. It is Greenfields' responsibility to act on this information.

2. *Greenfields keeps a record of all children with medical conditions*

- 2.1. Greenfields keeps a register of children with medical conditions to identify and safeguard these students. This register is held in a central, secure location, with access by staff as appropriate, and includes the child's individual healthcare plan.
- 2.2. Greenfields ensures that the child's confidentiality is protected in line with the General Data Protection Regulation (GDPR), and will only share this information with relevant members of staff and healthcare professionals as appropriate.

3. *All children with a medical condition have an individual healthcare plan*

- 3.1. Greenfields recognises that needs are specific to an individual child. As such, all pupils with a medical condition require an individual healthcare plan.

- 3.2. All children with a medical condition will require a meeting to discuss the individual healthcare plan. This may be as part of the induction or admissions process. For more severe/complex conditions, an additional meeting between relevant staff (including those who will be providing support to the child) and the parent/carer will normally be required to complete the individual healthcare plan, and may also involve health professionals and the child if appropriate. This should ideally take place before the start of the academic year or school term if mid-year entry (Appendix 3).
- 3.3. The format of an individual healthcare plan may vary according to the nature and severity of the medical condition. This may range from a nursery asthma card (see Appendix 4) to a more detailed individual healthcare plan as appropriate. All individual healthcare plans should detail the medication and care requirements at nursery, what to do in an emergency and details of the child's GP. Appendix 4 shows template individual healthcare plans for common medical conditions.
- 3.4. For more severe and/or complex medical conditions, the individual healthcare plan should also include an individual risk assessment (Appendix 5) and an assessment of how the condition may impact on the child's learning, behaviour, performance and wellbeing, and plans to mitigate these risks and minimise disruption.
- 3.5. If a child has special educational needs or disabilities (SEND), these needs should be made clear in the individual healthcare plan and linked to their SEN or Education, Health and Care (EHC) plan if they have one.
- 3.6. Greenfields recognises that needs change over time. As such, individual healthcare plans should be updated annually, or whenever the child's needs change. It is good practice to meet with parents annually to review the individual healthcare plans and Greenfield's considers ways of doing this, such as during parents' evenings.
- 3.7. A copy of the individual healthcare plan is maintained and updated by Greenfields and is easily accessible to staff who need to refer to it, while also preserving confidentiality in line with the General Data Protection Regulation.

Medication

4. Greenfields has clear guidance on administering medication at nursery

- 4.1. Medication should only be administered at nursery when it would be detrimental to a child's health or school attendance not to do so. Where clinically possible, parents/carers should request their prescribing clinician to prescribe medication in dose frequencies which enable them to be taken outside the nursery day.
- 4.2. If medication is required at nursery, this will only be given as detailed in the child's individual health care plan, and when parents/carers fill out a medication consent form. *If there is a short-term need parents/carers should contact the nursery to discuss and the medication consent form must be completed by parents/carers.* (Appendix 6).
- 4.3. Greenfields keeps an accurate record of all the medication administered, including the dose, time, date and supervising staff (Appendix 7). Records offer protection to staff and children and provide evidence that agreed procedures have been followed.

5. Greenfields supports staff who administer medication

- 5.1. Greenfields ensures that there are members of staff trained to administer routine and emergency medication and undertake procedures to meet the care needs of an individual child (see section 11).
- 5.2. All staff are aware of the specific members of staff trained to administer medication or medical procedures in an emergency situation.
- 5.3. Staff who may be regularly expected to administer medication and undertake medical procedures should have this responsibility recognised in their job description. Staff are encouraged to volunteer for this role as part of their duty of care.

- 5.4. The governing board will ensure that the appropriate level of insurance is in place and appropriately reflects the level of risk.

6. Greenfields has clear guidance on storing medication and equipment at nursery

- 6.1. Greenfields ensures that all medication is stored safely, and that children with medical conditions and staff know where they are at all times, and who holds the key to the storage facility.
- 6.2. *Greenfields does not allow children to carry their own medication/equipment.*
- 6.3. Greenfields ensures that medication is in date and labelled in its original container where possible (although insulin will generally be supplied in an insulin injector or pump), and in accordance with its instructions including storage temperature.
- 6.4. Greenfields keeps controlled drugs (e.g. methylphenidate [Ritalin], some strong painkillers marked CD on container) stored securely, but accessibly, with only named staff having access.
- 6.5. Parents/carers must collect all medication/equipment annually, and to provide new and in-date medication at the start of the academic year.
- 6.6. Greenfields does not dispose of any medication. It is the parent/carer's responsibility to dispose of out-of-date medication.

7. Greenfields has clear guidance on emergency inhalers and adrenaline pens

- 7.1. Greenfields does not allow children to keep their own inhalers and adrenaline pens.
- 7.2. *Greenfield's emergency asthma inhalers and adrenaline pens are available for children whom written parental consent and medical authorisation for use has been given. They are stored in a secure location but not locked away (see Appendix 8 for more details).*

Training

8. Greenfields promotes staff training in supporting children with medical conditions

8.1. Greenfields recognises that different levels of training are required for different members of staff in order to meet Greenfields' duties to support pupils with medical conditions.

9. Level 1 – All staff are aware of the medical conditions policy, emergency procedures and are encouraged to undergo further training

9.1. Greenfields ensures that all staff, including temporary staff, are aware of this 'Supporting Children with Medical Conditions' policy and their role in implementing the policy as part of induction. *All staff will be required to sign up to this policy. This will be recorded in the staff file.*

9.2. All staff know which named members of staff should be called on in the event of a medical emergency and are familiar with the procedure for calling the emergency services. All staff are aware that if a child is taken to hospital by ambulance, a member of staff must accompany them and remain with them until a parent or carer arrives. Children should not be taken to hospital in staff cars.

9.3. Greenfields has posters on display in the staff room and school office that reiterates the steps to take during an emergency.

9.4. Greenfields encourages all staff to undertake awareness raising opportunities as part of its comprehensive programme of Continuing Professional Development (CPD), including First Aid training, as well as accredited online training modules tailored for schools around managing asthma and anaphylaxis (Appendix 10). The school keeps a record of staff training.

10. Level 2 – Greenfields has a sufficient number of trained first aiders

10.1. Greenfields ensures they carry out risk assessments as appropriate and have sufficient numbers of trained first aiders, taking into

account factors such as the size of the school (Appendix 11).

10.2. The first aiders (*including paediatric first aiders as appropriate*) are trained in the management of common medical emergencies and Basic Life Support, including Cardiopulmonary Resuscitation (CPR). This should be refreshed at least every three years.

11. Level 3 – Greenfields supports staff who take on specific responsibilities for supporting pupils with medical conditions

11.1. Greenfields has named members of staff who are 'Medical Conditions Co-ordinators/Leaders', a role that should be recognised in their job description. These staff are trained on managing medical emergencies and supporting the implementation of this 'Supporting Children with Medical Conditions' policy. These staff are clear about the support they can receive and included as part of their annual appraisals.

11.2. Some children with medical conditions require more specific training for named members of staff. The school ensures that this training is provided by appropriate professionals (see supporting document- levels of training guidance on Ealing Grid for Learning).

11.3. Greenfields ensures that there are sufficient numbers of staff trained to support children with specific medical conditions, taking into account staff absences, staff turnover and other contingencies.

11.4. Training should be sufficient to ensure that these members of staff are competent and have confidence in their ability to support children with medical conditions and to fulfil the requirements as set out in individual healthcare plans.

11.5. The family of a child should be key in providing relevant information to Greenfields about how their child's needs can be met, and parents/ carers should be asked for their views. They should provide specific advice, but should not be the sole trainer.

Whole School Environment

12. *The whole nursery environment is inclusive*

- 12.1. Greenfields is committed to providing an accessible physical environment for children with medical conditions. This includes out-of-school activities.
- 12.2. All staff are aware of the potential social problems that children with medical conditions may experience and use this knowledge, alongside our bullying policy, to help prevent and deal with any issues.
- 12.3. Greenfields uses opportunities within the curriculum to help promote a positive environment.
- 12.4. Greenfields recognises that any measures to identify children with medical conditions for their safety should be proportionate and take into account confidentiality and emotional wellbeing.

13. *Greenfields ensures that arrangements are made for children with medical conditions to participate in all aspects of the curriculum where reasonably possible*

- 13.1. Greenfields ensures that the needs of children with medical conditions are adequately considered so that they can participate fully in all structured and unstructured activities and extended nursery activities.
- 13.2. Greenfields understands the importance of all children taking part in physical activity (including out-of-school clubs and team sports). All relevant staff should make reasonable adjustments to physical activity sessions in accordance with a child's individual healthcare plan. This may involve ensuring that children have the appropriate medication/equipment/food with them during physical activity.
- 13.3. Greenfields makes sure that a risk assessment is carried out before an educational visit. The needs of children with medical conditions are considered during this process and plans are put in place for any additional medication, equipment or support that may be required. This will require consultation with parent/carers and children and may require advice from the relevant healthcare

professional to ensure that children can participate safely. Greenfields uses Ealing Council's [educational and recreational visits handbook](#) with relevant health and safety templates to complete.

14. *Greenfields understands the impact a medical condition may have on attendance and learning*

- 14.1. Greenfields staff understand that frequent absences, or symptoms, such as limited concentration and frequent tiredness, may be due to a child's medical condition.
- 14.2. Where a child has frequent absences or a prolonged absence due to a medical condition, it is expected that parents/ carers will work with Greenfields and healthcare providers to ensure relevant information is available as part of a coordinated care/support approach.
- 14.3. Greenfields will refer pupils with medical conditions who are finding it difficult to keep up educationally to a relevant member of staff (e.g. the Special Educational Needs Co-ordinator) who will liaise with the child (where appropriate) parent and the child's healthcare professional.
- 14.4. Where a child is returning to school following a period of hospital education or alternative provision (including home tuition), Greenfields will work with the local authority and educational provider to ensure that the child receives the support they need to reintegrate effectively. This may include updating their individual healthcare plan where necessary.

15. *Greenfields learns from incidents and complaints*

- 15.1. Greenfields investigates all serious incidents related to this policy and reports these to the Schools Health and Safety Advisor (Ealing Council Corporate Health and Safety). Learning from these incidents is shared with staff and used to inform any subsequent revisions to this policy.
- 15.2. Greenfields responds to all concerns and complaints related to implementation of this policy, in line with our complaints policy.

Appendix 1: 'Supporting Children at School with Medical Conditions' checklist

Area	In place	Needs some work	Not in place	Named person responsible for
Policy and implementation:				
Agreed policy in place				
Policy revised annually in consultation with governors and staff				
Policy on the school website				
Governing board committee with a responsibility for and link governor(s) who visits the school termly to monitor implementation				
Annual report from the headteacher to the governing board on this policy				
Annual report to parents/communication via newsletters				
Identification, registers and individual healthcare plans:				
Process in place for notifying the school of children with medical conditions (e.g. questionnaire)				
Process in place for ensuring all children with medical conditions have an individual healthcare plan in place before they start school				
Process in place for reviewing the individual healthcare plans every year				
A register of children with medical conditions in a secure location, with individual healthcare plans, medication consent forms, medication records, and individual risk assessment forms				
Medication:				
Stores medication securely but accessibly				
Process for ensuring all medication and equipment (including defibrillators) are in date				
Accurate record of medication administered				
Protocol for use of emergency inhalers and adrenaline autoinjectors (<i>if applicable</i>)				
Staff/training:				

Policy is part of all staff induction, including temporary, supply staff and volunteers				
Staff/training:				
All staff are aware of the emergency procedures (Inc. information displays)				
Information on this policy in the staff handbook				
All staff know the children they work with who have an individual healthcare plan/medical conditions				
Greenfields has risk assessed and has a sufficient number of trained first aiders				
Insurance cover current and adequate to needs				
Medical conditions co-ordinators/leads are clearly known by all staff, children, parents and other stakeholders				
Medical conditions co-ordinators/leads are clear about line management arrangements, annual appraisals and attend regular training				
Job descriptions exist for medical conditions co-ordinators/leads and includes relevant responsibilities				
Whole school environment:				
Centre admission arrangements take this policy into consideration				
Risk assessments for educational visits are in place				
Process for reporting incidents to Ealing Council Health and Safety				

Appendix 2: Medical questionnaire (for the school enrolment form and annually thereafter)

Name of child	
Date of Birth	
Name of GP	
Address of GP	

1. Is your child currently under the care of the GP/clinic/hospital for a medical condition* (physical or mental health)? Yes / No
If yes, please give details:

2. Is there any other condition/health concern you need to make us aware of? Yes / No
If yes, please give details:

3. Does your child require medication to be taken during school hours? Yes / No
If yes, please give details:

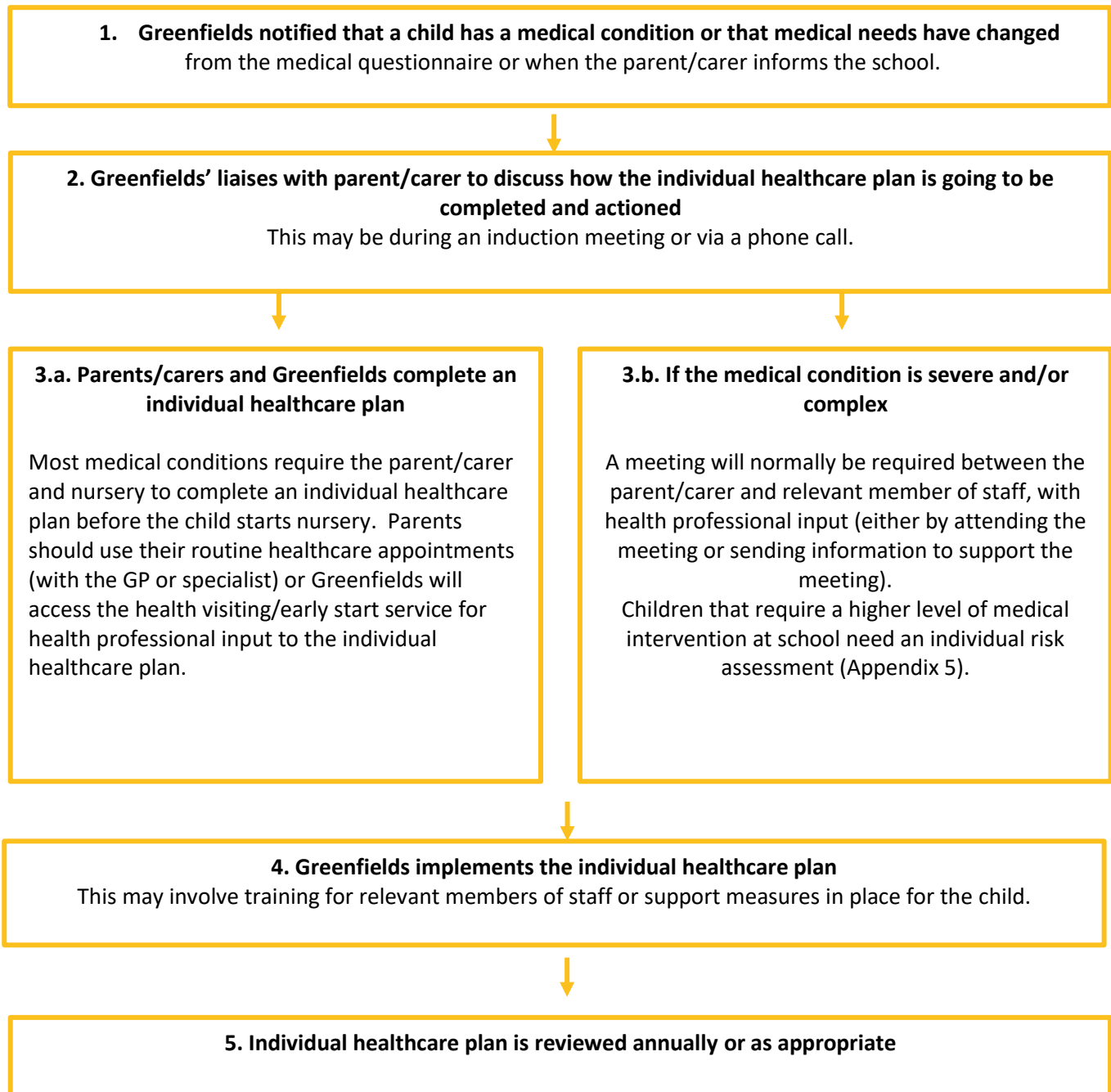
If you have ticked 'yes' above, a member of staff will contact you to discuss your child's medical needs further. All children with medical conditions* will require an individual healthcare plan before they start nursery. If the medical condition is serious, complex and/or life threatening we will organise a meeting to discuss the individual healthcare plan. If medication needs to be taken at nursery, all parents/carers will need to complete the medication form (Appendix 6 of the 'Supporting Children with Medical Conditions' Policy).

4. I give consent to share this information with relevant nursery staff and health professionals including the Health Visiting/Early Start service. Yes / No

Name of Parent / Carer	
Signature of Parent / Carer	
Date	

* Greenfields takes 'medical condition' to refer to any physical or mental health condition that requires ongoing health professional input.

Appendix 3: Procedure following notification that a child has a medical condition (flow chart).



Appendix 4: Individual healthcare plans templates

Please note that these are some suggested documents to use. The child may have a different individual healthcare plan from their health professional which would be acceptable.

Asthma UK school asthma card

https://www.asthma.org.uk/globalassets/health-advice/resources/schools/school_asthma_card_september_2014_ver_b.pdf

BAS allergy action plans

<http://www.bsaci.org/about/download-paediatric-allergy-action-plans>

Diabetes UK sample individual healthcare plan

<https://www.diabetes.org.uk/guide-to-diabetes/your-child-and-diabetes/schools/ihp-a-childs-individual-healthcare-plan>

Young Epilepsy sample individual healthcare plan

<http://www.youngepilepsy.org.uk/dmdocuments/IHP-child-form.pdf>

Health Conditions in School Alliance generic individual healthcare plan

http://medicalconditionsatschool.org.uk/documents/Individual%20Healthcare%20plan_Part%202.pdf

Bladder and Bowel conditions individual healthcare plan

<http://medicalconditionsatschool.org.uk/documents/IHP-Bowel-Bladder-conditions.pdf>

Appendix 5: Individual child risk assessment form

Hazard	Risk			Existing control measures	Recommendations/further actions required
	Likelihood of occurrence	Severity of harm	Overall risk		

Appendix 6: Medicines permission letter for children with medical conditions

In line with Greenfields' 'Supporting Children at School with Medical Conditions' Policy, Greenfields will not give your child medicine unless you complete and sign this form.

Name of school/setting	
Date	
Child's name	
Name and strength of medicine	
Reason for use	
Expiry date	
How much to give (i.e. dose to be given)?	
When to be given	
Any other instructions	
Number of tablets/quantity to be given to school/setting	

Note: Medicines must be in the original container as dispensed by the pharmacy

Daytime phone no. of parent/carer	
Name of GP, GP practice name and phone number	
Agreed review date to be initiated by	

The above information is, to the best of my knowledge, accurate at the time of writing and I give consent to Greenfields staff administering medicine in accordance with their policy. I will inform Greenfields immediately, in writing, if there is any change in dosage or frequency of the medicine or if the medicine is stopped.

Parent/carers signature

Print name

Date

Designated member of staff's signature

Print name

Date

Appendix 7: Medication records

Record of medicines administered to an individual child

Name of school/setting	
Name of child	
Date medicine provided by parent/carer	
Group/class	
Name and strength of medicine	
Dose and frequency of medicine	
Quantity received	
Quantity returned	
Expiry date	

Staff signature -----

Date	/ /	/ /	/ /
Time given			
Dose given			
Name of member of staff			
Staff initials			

Date	/ /	/ /	/ /
Time given			
Dose given			
Name of member of staff			
Staff initials			

Record of medicines administered to all children

Date	Child's name	Time	Name of medicine	Dose given	Spacer cleaned? Y/N/N-A	Any reactions	Signature of staff	Print name
/ /								
/ /								
/ /								
/ /								
/ /								
/ /								
/ /								
/ /								
/ /								
/ /								
/ /								
/ /								
/ /								
/ /								

Appendix 8: Emergency Inhalers and Adrenaline Auto-Injectors (AAIs)

This section needs to be read in conjunction with the following Department of Health guidance:

https://www.gov.uk/government/uploads/system/uploads/attachment_data/file/416468/emergency_inhalers_in_schools.pdf

https://www.gov.uk/government/uploads/system/uploads/attachment_data/file/645476/Adrenaline_auto_injectors_in_schools.pdf

Schools are not required to hold an inhaler or AAIs – this is a discretionary power enabling schools to do this if they wish. However, keeping an inhaler and/or AAIs for use in an emergency prevents unnecessary and traumatic trips to hospital for a child and potentially saves their life. Schools that choose to hold an emergency inhaler and/or AAIs need protocols for their use to protect staff by ensuring they know what to do in the event of a child having an asthma or anaphylactic attack.

The protocol should include:

- Arrangements for the supply, storage, care, and disposal of the inhaler, spacers and AAI devices, in line with this ‘Supporting Children with Medical Conditions’ policy
- Having a register of children in the school who have been:
 - Diagnosed with asthma or prescribed a reliever inhaler. A copy of the register should be kept with the emergency inhaler
 - Prescribed AAIs (or where a doctor has provided a written plan recommending AAI(s) to be used in the event of anaphylaxis).
- Having written parental consent for use of the emergency inhaler and/or for use of the spare AAI(s), included as part of a child’s individual healthcare plan. This should be signed in the school asthma card or the allergy action plan (Appendix 4).
- Ensuring that the emergency inhaler and spare AAIs are only used by children with written parental consent for their use
- Appropriate support and training for staff is provided in the use of the emergency inhaler and spare AAIs in line with this ‘Supporting Children with Medical Conditions’ policy
- Keeping a record of use of the emergency inhaler and/or AAIs as required by this ‘Supporting Children with Medical Conditions’ policy (Appendix 7) and informing the parent/carer when their child has been administered an inhaler/AAI and whether this was the school’s spare inhaler/AAI or the pupil’s own device (Appendix 9). This should include where and when the attack took place, how much medication was given and by whom.
- Having at least two volunteers responsible for ensuring the protocol is followed

Schools can purchase small quantities of inhalers, spacers and AAIs from a community pharmacy. The pharmacy will need a request signed by the principal or head teacher on headed paper stating:

- The name of the school for which the product is required;
- The purpose for which that product is required, and
- The total quantity required

ASTHMA

From 1st October 2014 the Human Medicines (Amendment) (No. 2) Regulations 2014 allows schools to buy salbutamol inhalers, without a prescription, for use in emergencies.

The emergency salbutamol inhaler should only be used by children, for whom written parental consent for use of the emergency inhaler has been given, who have either been diagnosed with asthma and prescribed an inhaler, or who have been prescribed an inhaler as reliever medication.

An Emergency asthma inhaler kit should include:

- A salbutamol metered dose inhaler;
- At least two plastic spacers compatible with the inhaler;
- Instructions on using the inhaler and spacer;
- Instructions on cleaning and storing the inhaler;
- Manufacturer's information;
- A checklist of inhalers, identified by their batch number and expiry date, with monthly checks recorded;
- A note of the arrangements for replacing the inhaler and spacers;
- A list of children permitted to use the emergency inhaler as detailed in their individual healthcare plans;
- A record of administration (i.e. when the inhaler has been used). This should include where and when the attack took place how much medication was given and by whom.

Schools can consider keeping more than 1 kit if they cover more than 1 site.

It is recommended that at least 2 volunteers from school staff should have responsibility for ensuring that:

- On a monthly basis, the inhaler and spacers are present and in working order, and the inhaler has sufficient number of doses available;
- Replacement inhalers are obtained when expiry dates approach;
- Replacement spacers are available following use;
- The plastic inhaler housing (which holds the canister) has been cleaned, dried and returned so that replacements are available if necessary.

The kit must be kept in a safe place but must not be locked away. It should be kept separate from any children's inhalers and the inhaler(s) labelled to avoid confusion with a child's inhaler.

The plastic spacer should not be reused and can be given to the child to use at home. The inhaler can be reused provided it is cleaned after use.

A child may be prescribed an inhaler for their asthma which contains an alternative reliever medication to salbutamol (such as terbutaline). The salbutamol inhaler should still be used by these children if their own inhaler is not accessible – it will still help to relieve their asthma and could save their life.

See also: Healthy London Partnership pharmacy guidance:

<https://www.healthy london.org/wp-content/uploads/2017/10/Pharmacy-guidance-for-supply-of-salbutamol-to-schools.docx>

ANAPHYLAXIS

From 1 October 2017, the Human Medicines (Amendment) Regulations 2017 allows schools to obtain adrenaline auto-injector (AAI) devices without a prescription, for emergency use in children who are at risk of anaphylaxis but their own device is not available or not working (e.g. because it is broken, or out-of-date).

Schools may administer their “spare” adrenaline auto-injector (AAI), obtained for use in emergencies, if available, but only to a child at risk of anaphylaxis, where both medical authorisation and written parental consent for use of the spare AAI has been provided. The school’s spare AAI can be administered to a child whose own prescribed AAI cannot be administered correctly without delay.

In severe cases the allergic reaction can progress within minutes into a life-threatening reaction. Severe reactions can require much more than an adrenaline injection and it is therefore vital to contact Emergency Services as early as possible.

In the event of a possible severe allergic reaction in a child who does not meet these criteria, emergency services (999) should be contacted and advice sought from them as to whether administration of the spare emergency AAI is appropriate.

SEVERE ANAPHYLAXIS IS AN EXTREMELY TIME-CRITICAL SITUATION: DELAYS IN ADMINISTERING ADRENALINE HAVE BEEN ASSOCIATED WITH FATAL OUTCOMES.

Depending on their level of understanding and competence, **children and particularly teenagers should carry their AAI(s) on their person at all times or they should be quickly and easily accessible at all times.** If the AAI(s) are not carried by the pupil, then they should be kept in a central place in a box marked clearly with the child's name but NOT locked in a cupboard or an office where access is restricted.

AAIs are available in different doses depending on the manufacturer. Schools should hold a single brand to avoid confusion in training and administration. ‘EpiPen’ is the most well-known and likely to be the brand used by most pupils.

It is good practice for schools holding spare AAIs to store these as part of an emergency anaphylaxis kit which should include:

- 1 or more AAI(s)
- Instructions on how to use the device(s)
- Instructions on storage of the AAI device(s)
- Manufacturer’s information
- A checklist of injectors, identified by their batch number and expiry date with monthly checks recorded
- A note of the arrangements for replacing the injectors
- A list of children to whom the AAI can be administered
- An administration record.

The kit must be kept in a safe place but must not be locked away. It should be kept separate from any children’s AAIs and the labelled to avoid confusion. The kit should be located not more than 5 minutes away from where it might be needed.

AAIs can be used through clothes and should be injected into the upper outer thigh in line with the instructions provided by the manufacturer. If someone appears to be having a severe allergic reaction (anaphylaxis), emergency services (999) MUST be called without delay, even if they have already used their own AAI device, or a spare AAI.

- When dialling 999, give clear and precise directions to the emergency operator, including the location’s postcode.
- If the pupil’s condition deteriorates and a second dose adrenaline is administered after making the initial 999 call, make a second call to the emergency services to confirm that an ambulance has been dispatched.
- Send someone outside to direct the ambulance paramedics when they arrive.
- Tell the paramedics:
 - If the child is known to have an allergy
 - What might have caused this reaction e.g. recent food;
 - The time the AAI was given.

Appendix 9: Letters to inform parents/carers of their child's use of the school's emergency inhaler*

School name:.....

Child's name:.....

Child's class:.....

Date:.....

Dear.....

This letter is to formally inform you that.....has had problems breathing today.

This happened when.....

They did not have their own inhaler with them so a member of staff helped them to use the emergency asthma inhaler containing salbutamol. They were givenpuffs.

Although they soon felt better, we would strongly advise you that your child is seen by their own doctor as soon as possible.

Please provide a new unopened replacement spacer as soon as possible.

Please can you ensure that your child brings in a working in-date inhaler and spacer for use in school. Both should be clearly labelled with your child's name and date of birth.

Yours sincerely

**Please note that parents will be informed immediately when a child has used the school's emergency adrenaline autoinjector (and emergency services called).*

Appendix 10: Training resources for Ealing school staff

Online

Anaphylaxis Campaign AllergyWise Online Course

Free online anaphylaxis training course AllergyWise for Schools is designed to ensure that key staff in schools are fully aware of the signs and symptoms of anaphylaxis, how to provide emergency treatment and the implications for management of severely allergic children from Key Stages 1 to 5 in an education setting.

<https://allergywise.org.uk/course-login/>

Supporting Children's Health Asthma Online Course

Being aware of asthma and its triggers can help to ensure children with asthma in your care are safe and can get involved in the same activities as any other child without issue or harm.

This module aims to help you support children who have asthma by:

- Raising your awareness of the condition and how it's managed
- Exploring plans, you may need to ensure that children with asthma in your care are supported

<https://www.supportingchildrenshealth.org/asthma-module/>

MindEd

MindEd is a free educational resource on children and young people's mental health for all adults.

<https://www.minded.org.uk>

Face to face

School nursing service training (includes management of medical emergencies training for schools):

<https://www.egfl.org.uk/services-to-schools/ealing-school-nursing-service-201819>

Ealing Health and Safety training (includes First Aid training for schools):

<https://www.egfl.org.uk/facilities/health-and-safety/health-and-safety-training>

Appendix 11: First aid training guidance

First-aid can prevent deaths and can also prevent minor medical problems and injuries from escalating into major ones. Guidance exists for schools on the subject of first aid and this section of the 'Supporting Children at Schools with Medical Conditions' policy draws and refers to these accordingly.

First aid in schools:

The Department for Education good practice guidance titled [Guidance on First Aid for Schools](#) explains that the numbers of first aid personnel required in schools is not an exact science. A suitable and sufficient risk assessment needs to be carried out taking into account the school's specific circumstances such as: the size and location of the school, any specific hazards on-site, any specific needs and any historic accident data. Schools should consider the risks to employees, pupils and visitors as part of this risk assessment.

The Department for Education [Statutory framework for the early years foundation stage](#) sets out mandatory standards for the learning, development and care for children from birth to 5 years old. In this, it is mandated that all Schools and Ofsted registered early years providers must have at least one person who has a current paediatric first aid (PFA) certificate available at all times when children are present, and must accompany children on outings. This framework also mandates the PFA Certificate course criteria.

In addition, HSE document [L74](#) (Third edition-2013) details useful guidance on first aid matters in the workplace including: first aid courses content, suggested numbers of first aid personnel, first aid kits and training provider selection. This document is a valuable resource to help schools complete their first aid risk assessment.

Ealing Council has a page on [EGfL](#) dedicated to first aid which is also a useful resource for schools. This page includes a blank template that Schools can use to carry out their first-aid risk assessment.

Automatic External Defibrillators (AEDs) in schools:

Ealing Council purchased the Powerheart® G5 AED for schools in the Borough in 2017. This was the most appropriate unit for schools as advised by the London Ambulance Service.

The Department for Education guide for schools on [automated external defibrillators \(AEDs\)](#) provides guidance on the purchase, use, installation, training, maintenance and additional considerations (such as the development of a resuscitation plan and safety considerations) of AEDs. This guidance explains that AEDs are designed for use by people who can simply follow the step-by-step instructions provided on the AED at the time of use, without any specific training. This guidance also explains that it should be sufficient for schools to circulate the manufacturer's instructions to all staff and then to provide a short general awareness briefing session in order to meet their statutory obligations. Any awareness briefing could be incorporated into any wider training on CPR and the chain of survival.

Ealing Council has a page on [EGfL](#) dedicated to AEDs which is also a useful resource for Schools. This page includes a video that demonstrates the use of the Powerheart® G5 AED.

Appendix 12: Checklist: responsibilities of parents/carers

- ✓ Informing Greenfields if your child has a 'medical condition' (as defined in the 'Supporting Children with Medical Conditions' policy) and providing consent to share this information with relevant healthcare professionals including the school nursing service.
- ✓ Liaising with the school to complete an individual healthcare plan, ideally before the child starts nursery. The individual healthcare plan requires health professional input, either by the health visiting service (arranged by Greenfields), or by appointment with your health professional (GP, practice nurse or specialist).
- ✓ Completing a medicines permission letter if your child requires medication during school hours.
- ✓ Completing an individual child risk assessment form during a meeting with school staff if your child's needs are severe, complex or potentially life threatening.
- ✓ Informing Greenfields of any medicines the child requires during visits, field trips and other out-of-school activities.
- ✓ Ensuring your child's medicines and medical devices are labeled with their full name and date of birth, in the original pharmacy packaging.
- ✓ Ensuring that your child's medicines are within their expiry dates.
- ✓ Ensuring that new and in date medicines come into nursery on the first day of the new academic year, to collect all medication back at the end of the school year, and to dispose of any out-of-date medication.
- ✓ Providing Greenfields with supporting information from your healthcare professional if your child has frequent or prolonged absence(s) from school.
- ✓ Informing the school of any changes to your child's condition
- ✓ Liaising with the school annually to ensure that the individual healthcare plan is up to date (even if just to say 'no changes').

Appendix 13: Other key reference documents

Department for Education guidance

Supporting pupils at schools with medical conditions guidance:

<https://www.gov.uk/government/publications/supporting-pupils-at-school-with-medical-conditions--3#history>

Healthy London Partnership resources

Asthma schools' guidance:

<https://www.healthylondon.org/wp-content/uploads/2017/11/London-schools-guide-for-children-and-young-people-with-asthma.pdf>

<https://www.healthylondon.org/resource/london-asthma-toolkit/schools/>

Diabetes schools' guidance:

<https://www.healthylondon.org/resource/london-guide-teachers-parents-children-young-people-diabetes/>

Epilepsy schools' guidance:

<https://www.healthylondon.org/resource/london-epilepsy-guide-schools/>

Bladder and Bowel guidance:

<https://www.eric.org.uk/healthy-bladders-and-bowels-at-school>